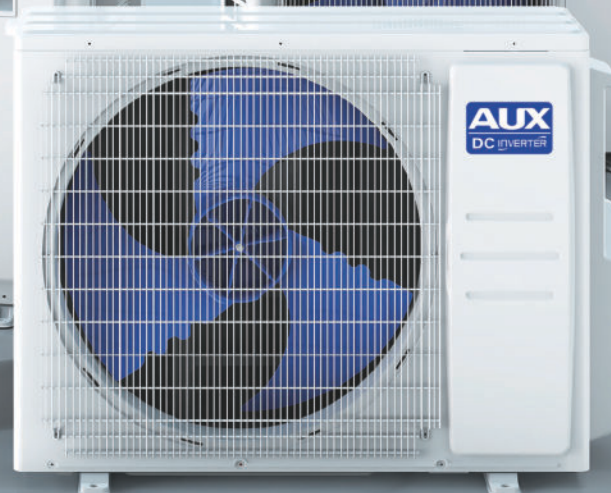
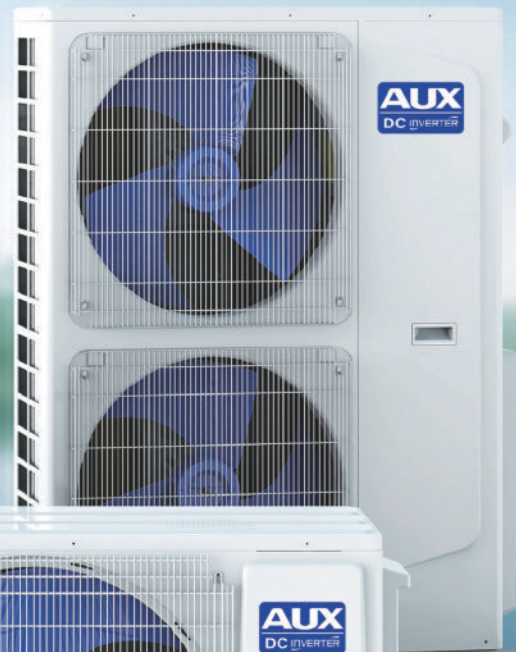
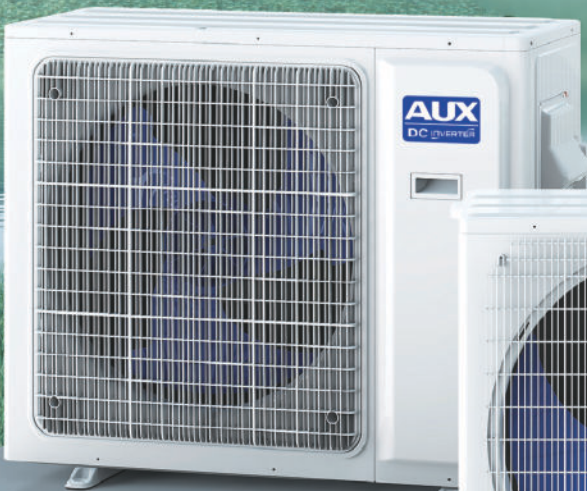
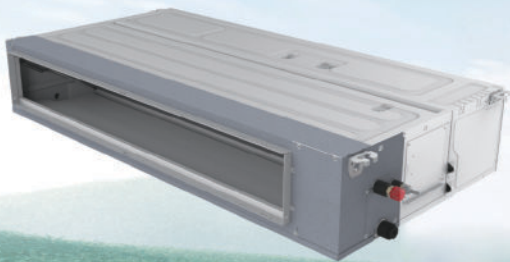


AUX

MULTI-ZONE SERIES



OUTDOOR UNIT

HIGH-PERFORMANCE AIR CONDITIONING FOR EXTREME COLD

-30°C low temperature cooling to meet the cooling needs in various scenarios.

*Data from AUX lab, 05/03/24. Data may change according to test surroundings. AUX reserves right of explanation on data.



HIGHLY EFFICIENT AND ENERGY-SAVING

Energy Star Cold Climate certified.



Up to 25 SEER2 and 4.4 COP.

*Data from AUX lab, 06/02/24. Data may change according to test surroundings. AUX reserves right of explanation on data.



STABILITY IN CASE OF VOLTAGE FLUCTUATIONS

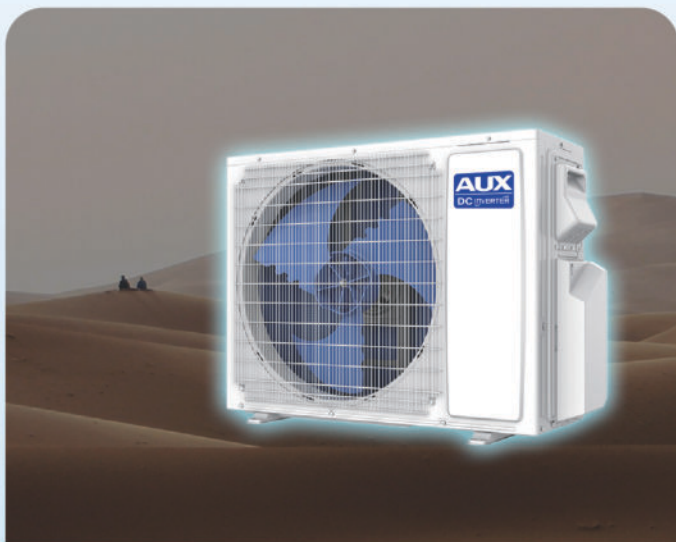


Designed to operate normally under voltage fluctuations between 125V and 265V.

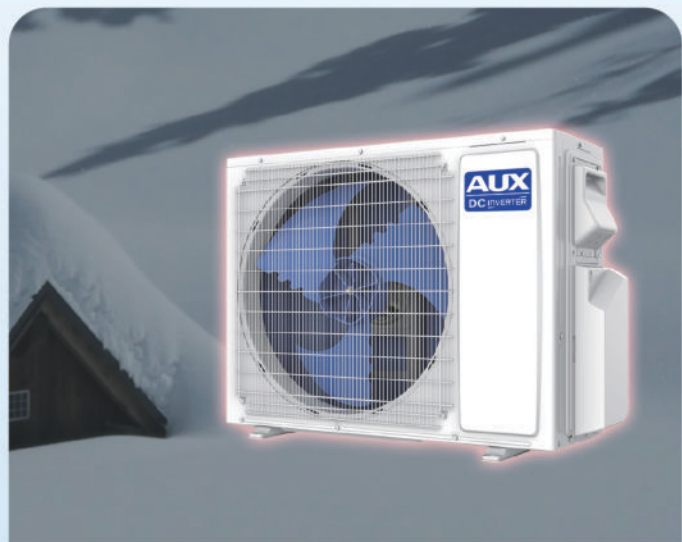
*Data from AUX lab, 27/02/24. Data may change according to test surroundings. AUX reserves right of explanation on data.

OPERATING RANGE

Even under extreme weather conditions, cooling at high temperature (up to 52°C) and heating at low temperature (down to -30°C).



High-temperature refrigeration : 52°C



Low temperature heating: -30°C

REMOTE CONTROL - WI-FI

Easily use the app from anywhere to adjust the temperature.

Come home to a cool home.



EASY INSTALLATION

With an installation guide, plate support and built-in level, installation can be done with only one technician instead of two, reducing labor costs.



4) Plate Support
Provides more operating space

3) Removable Lower Part
Easy access to pipe connections
*Except: AJAN 36K / AMAR 24K

*Picture is for reference only. The actual object shall prevail.



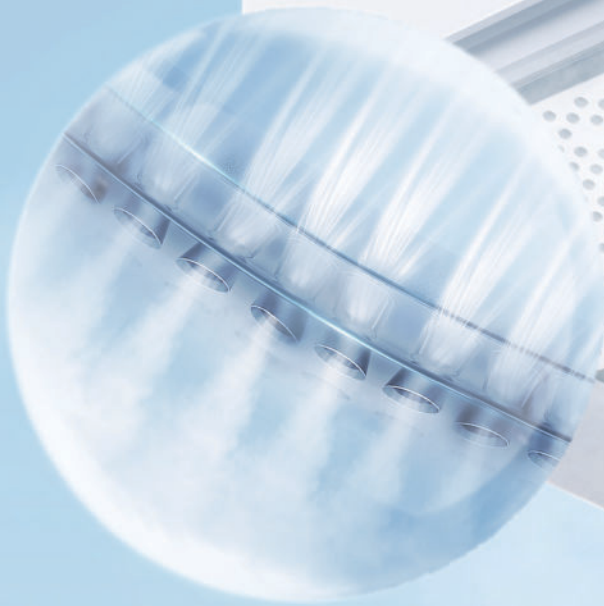
1) Installation Guide Plan
Quickly locate the installation position



2) Installation Plate
Easy to install with additional built-in level



DC INVERTER



SOFT MODE

Airflow through over 3 000 micro vents produces gentle airflow while preventing drafts for ultimate comfort. Perfect to use while sleeping.

*Micro vents: 1 729 (09K) 1 935 (12K) 2 921 (18K)

PATENT No. : 202121995992.8 / 202322368367.6

VOICE CONTROL

Easily operate the AC from across the room with your voice and simple commands.

No remote or app required.



Hey, Lisa

I'm here

*Voice control is only available in English.

AIR CIRCULATION

Air is distributed through a large diameter spiral wind wheel for greater airflow and lower noise.



FRESH AIR

Equipped with anti-fungal filters to keep your air clean, capturing dust and bacteria, to help improve air quality.



SLEEP MODE

Activate sleep mode at night to sleep comfortably with air distribution ensuring constant comfort.



AIR FLOW

With superior, long-range air distribution, our air conditioners provide even cooling, even in the largest spaces.



Square Panel



Detachable Air Guide Vane



Health Filter



Compact Body



360° Air Supply



Fresh Air Intake



New Anti-leakage Water Pan



Built-in Pump



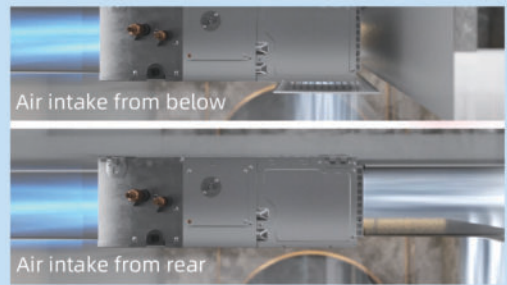
Digital Display



Wi-Fi Control (optional)

MULTIPLE ENTRY

Two types of air intake, from the rear and bottom, to meet all installation needs.



FLEXIBLE DRAINAGE

Both left and right drainage to meet all installation needs.



REMOVABLE CONTROL BOX

Convenient independent structure design for easy maintenance.



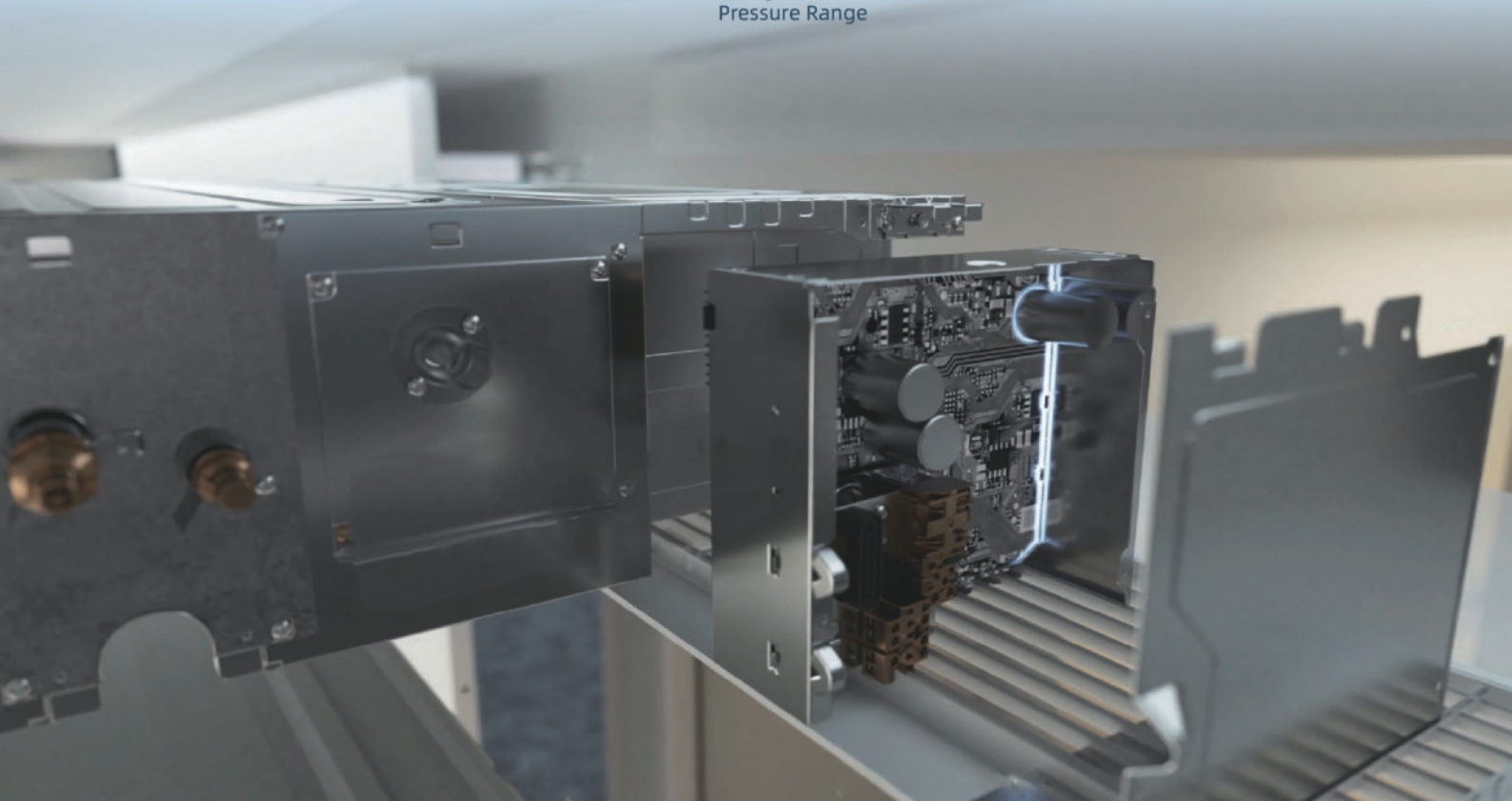
Fresh Air Intake



Larger Static Pressure Range

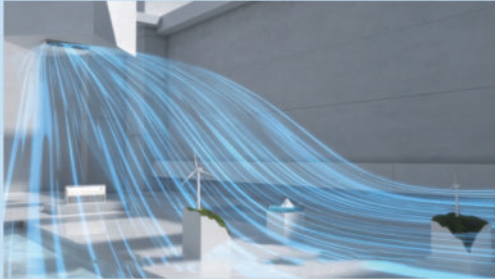


Constant Airflow



HIGH AIR FLOW

Long-distance air supply, providing superior airflow and greater comfort up to 33 ft., for large rooms.



*Data source : Air Supply Distance Laboratory.

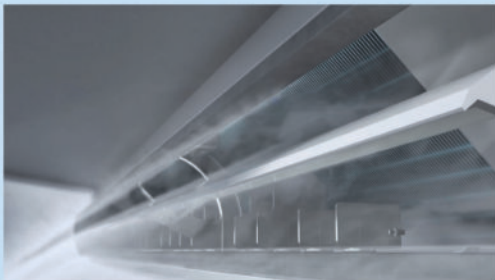
BUILT-IN DISPLAY

Built-in display panel features a moisture-proof seal to help extend the life of the unit.



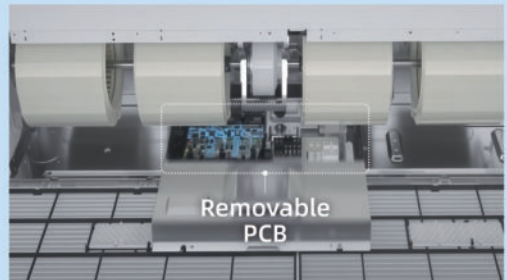
ANTI-CONDENSATION

Industry-leading anti-condensation insulation design for air outlet.



EASY MAINTENANCE

Extra space for easy maintenance, no need to take out the entire electrical control box.



FRESH AIR INTAKE

Fresh air intake hole, filters fresh air to help improve air quality.

A diagram of the ceiling unit highlighting six key features with icons and text labels:

- Fresh Air Intake**: Represented by an icon of a hand holding a leaf.
- Low Noise**: Represented by a speaker icon with an 'X' over it.
- Filter**: Represented by a grid icon.
- Anti-condensation**: Represented by a water drop icon.
- Two-way Drainage**: Represented by a double-headed arrow icon.
- Easy to Disassemble**: Represented by a wrench and screwdriver icon.

Outdoor Unit



SPECIFICATIONS

| REGULAR SERIES | | | 2 Zones | 3 Zones | 4 Zones | | 5 Zones |
|---|----------------|----------|---------------------------------|----------------------------------|----------------------------------|----------------------------------|----------------------------------|
| Model | | | ASPR18HPMULO | ASPR24HPMULO | ASPR30HPMULO | ASPR36HPMULO | ASPR42HPMULO |
| Cooling (95°F/35°C) | | | | | | | |
| Ductless | Capacity Rated | Btu/h | 17700 | 24000 | 30000 | 36000 | 37000 |
| | Capacity Range | Btu/h | 3800~19800 | 4900~31400 | 6000~38200 | 6350~38500 | 7300~42000 |
| | Power Input | W | 1440 | 1920 | 2400 | 2930 | 3083 |
| Ducted | Capacity Rated | Btu/h | 17700 | 24000 | 30000 | 36000 | 37000 |
| | Capacity Range | Btu/h | 3800~19800 | 4900~31400 | 6000~38200 | 6350~38500 | 7300~42000 |
| | Power Input | W | 1500 | 2034 | 2500 | 3103 | 3304 |
| Mixed | Capacity Rated | Btu/h | 17700 | 24000 | 30000 | 36000 | 37000 |
| | Capacity Range | Btu/h | 3800~19800 | 4900~31400 | 6000~38200 | 6350~38500 | 7300~42000 |
| | Power Input | W | 1469 | 1975 | 2449 | 3013 | 3190 |
| Heating (47°F/8.3°C) | | | | | | | |
| Ductless | Capacity Rated | Btu/h | 18000 | 24000 | 30000 | 36000 | 40000 |
| | Capacity Range | Btu/h | 4200~22000 | 5200~32000 | 6300~36000 | 7000~43000 | 8000~46000 |
| | Power Input | W | 1390 | 1760 | 2250 | 2640 | 3010 |
| Ducted | Capacity Rated | Btu/h | 18000 | 24000 | 30000 | 36000 | 40000 |
| | Capacity Range | Btu/h | 4200~22000 | 5200~32000 | 6300~36000 | 7000~43000 | 8000~46000 |
| | Power Input | W | 1353 | 1851 | 2198 | 2705 | 3006 |
| Mixed | Capacity Rated | Btu/h | 18000 | 24000 | 30000 | 36000 | 40000 |
| | Capacity Range | Btu/h | 4200~22000 | 5200~32000 | 6300~36000 | 7000~43000 | 8000~46000 |
| | Power Input | W | 1370 | 1804 | 2226 | 2671 | 3006 |
| Efficiency | | | | | | | |
| Ductless | SEER2 | Btu/h/W | 22 | 23 | 23 | 23 | 22 |
| | HSPF2(IV) | Btu/h/W | 10 | 10 | 10 | 10 | 10 |
| | COP | W/W | 3.8 | 4 | 3.9 | 4 | 3.9 |
| Ducted | EER2 | Btu/h/W | 12.3 | 12.5 | 12.5 | 12.3 | 12 |
| | SEER2 | Btu/h/W | 19.5 | 20.5 | 20 | 20 | 20 |
| | HSPF2(IV) | Btu/h/W | 9.5 | 9.5 | 9.5 | 10 | 9.2 |
| Mixed | COP | W/W | 3.9 | 3.8 | 4 | 3.9 | 3.9 |
| | EER2 | Btu/h/W | 11.8 | 11.8 | 12 | 11.6 | 11.2 |
| | SEER2 | Btu/h/W | 20.75 | 21.75 | 21.5 | 21.5 | 21 |
| Ductless | HSPF2(IV) | Btu/h/W | 9.75 | 9.75 | 9.75 | 10 | 9.6 |
| | COP | W/W | 3.85 | 3.9 | 3.95 | 3.95 | 3.9 |
| | EER2 | Btu/h/W | 12.05 | 12.15 | 12.25 | 11.95 | 11.6 |
| Measures | | | | | | | |
| Weight | Net | kg [lbs] | 34 [75] | 46.5 [102.5] | 67.5 [148.8] | 70 [154.3] | 81 [178.6] |
| Dimension W*H*D | Net | mm [in] | 780*557*290 [30.7*21.9*11.4] | 917*700*320 [36.1*27.6*12.6] | 970*808*383 [38.2*31.8*15.1] | 970*808*383 [38.2*31.8*15.1] | 970*808*383 [38.2*31.8*15.1] |
| | Packing | mm [in] | 903*615*382 [35.5*24.2*15.0] | 1015*762*425 [40.0*30.0*16.7] | 1105*885*495 [43.5*33.7*19.5] | 1105*885*495 [43.5*33.7*19.5] | 1105*885*495 [43.5*33.7*19.5] |
| | Air Flow | | m3/h | 2600 | 3800 | 4000 | 4000 |
| Sound Pressure Level | Rated | dB (A) | 54 | 57 | 58 | 59 | 59 |
| Piping | | | | | | | |
| Diameter | Liquid (O.D.) | mm [in] | 2x6.35 [1/4] | 3x6.35 [1/4] | 4x6.35 [1/4] | 4x6.35 [1/4] | 5x6.35 [1/4] |
| | Gas (O.D.) | mm [in] | 2x9.52 [3/8] | 3x9.52 [3/8] | 4x9.52 [3/8] | 4x9.52 [3/8] | 5x9.52 [3/8] |
| Max. Length | Total | m [ft] | 40 [131] | 60 [197] | 80 [263] | 80 [263] | 80 [263] |
| Max. Length | 1 Unit | m [ft] | 25 [82] | 30 [98] | 35 [115] | 35 [115] | 35 [115] |
| Max. Height Difference | IDU & ODU | m [ft] | 10 [33] | 10 [33] | 10 [33] | 10 [33] | 10 [33] |
| Electrical | | | | | | | |
| Power Supply | | V-,Ph,Hz | 208~230,1,60 | 208~230,1,60 | 208~230,1,60 | 208~230,1,60 | 208~230,1,60 |
| MCA | | A | 15 | 20 | 26 | 29 | 29 |
| MOCP | | A | 20 | 30 | 40 | 45 | 45 |
| Refrigerant | | | | | | | |
| Type | | | R32 | R32 | R32 | R32 | R32 |
| Charge | | kg [oz] | 1.1 [38.8] | 1.45 [51.2] | 1.9 [67] | 2.3 [81.2] | 2.9 [102.4] |
| Guaranteed Temperature Operation Range | | | | | | | |
| Cooling | | °C [°F] | -25~52 [-13~125] | -25~52 [-13~125] | -25~52 [-13~125] | -25~52 [-13~125] | -25~52 [-13~125] |
| Heating | | °C [°F] | -25~24 [-13~75] | -25~24 [-13~75] | -25~24 [-13~75] | -25~24 [-13~75] | -25~24 [-13~75] |

Remarks:
 1. All specifications are subject to change by the manufacturer without prior notice.
 2. All units are being tested and comply to ISO 5151.
 3. Sound pressure levels are measured in anechoic chamber. During actual operation, sound pressure level will be higher as a result of room specification condition.
 4. Data from AUX lab, 08/03/24. Data may change according to test surroundings. AUX reserves right of explanation on data.



Outdoor
Unit



SPECIFICATIONS

| HYPER SERIES | | | 2 Zones | 3 Zones | 4 Zones | 5 Zones |
|---|----------------|----------|----------------------------------|----------------------------------|-----------------------------------|-----------------------------------|
| Model | | | ASUM18HPMULO | ASUM24HPMULO | ASUM36HPMULO | ASUM42HPMULO |
| Cooling (95°F/35°C) | | | | | | |
| Ductless | Capacity Rated | Btu/h | 18000 | 24000 | 36000 | 42000 |
| | Capacity Range | Btu/h | 4800~25000 | 5500~32300 | 7200~42500 | 8350~46000 |
| | Power Input | W | 1440 | 1850 | 2880 | 3360 |
| Ducted | Capacity Rated | Btu/h | 18000 | 24000 | 36000 | 42000 |
| | Capacity Range | Btu/h | 4800~25000 | 5500~32300 | 7200~42500 | 8350~46000 |
| | Power Input | W | 1463 | 1846 | 2880 | 3415 |
| Mixed | Capacity Rated | Btu/h | 18000 | 24000 | 36000 | 42000 |
| | Capacity Range | Btu/h | 4800~25000 | 5500~32300 | 7200~42500 | 8350~46000 |
| | Power Input | W | 1452 | 1846 | 2880 | 3387 |
| Heating (47°F/8.3°C) | | | | | | |
| Ductless | Capacity Rated | Btu/h | 21000 | 26000 | 36000 | 42000 |
| | Capacity Range | Btu/h | 5000~26000 | 5850~36000 | 7600~52000 | 8450~53000 |
| | Power Input | W | 1620 | 1730 | 2640 | 3160 |
| Ducted | Capacity Rated | Btu/h | 21000 | 26000 | 36000 | 42000 |
| | Capacity Range | Btu/h | 5000~26000 | 5850~36000 | 7600~52000 | 8450~53000 |
| | Power Input | W | 1620 | 1814 | 2638 | 3156 |
| Mixed | Capacity Rated | Btu/h | 21000 | 26000 | 36000 | 42000 |
| | Capacity Range | Btu/h | 5000~26000 | 5850~36000 | 7600~52000 | 8450~53000 |
| | Power Input | W | 1620 | 1772 | 2638 | 3156 |
| Efficiency | | | | | | |
| Ductless | SEER2 | Btu/h/W | 23.3 | 24 | 24 | 24 |
| | HSPF2(IV) | Btu/h/W | 11 | 10.5 | 11 | 10.5 |
| | COP | W/W | 3.8 | 4.4 | 4 | 3.9 |
| | EER2 | Btu/h/W | 12.5 | 13 | 12.5 | 12.5 |
| Ducted | SEER2 | Btu/h/W | 20.5 | 21 | 21.5 | 22 |
| | HSPF2(IV) | Btu/h/W | 9.8 | 10 | 10 | 10 |
| | COP | W/W | 3.8 | 4.2 | 4 | 3.9 |
| | EER2 | Btu/h/W | 12.3 | 13 | 12.5 | 12.3 |
| Mixed | SEER2 | Btu/h/W | 21.9 | 22.5 | 22.75 | 23 |
| | HSPF2(IV) | Btu/h/W | 10.4 | 10.25 | 10.5 | 10.25 |
| | COP | W/W | 3.8 | 4.3 | 4 | 3.9 |
| | EER2 | Btu/h/W | 12.4 | 13 | 12.5 | 12.4 |
| Measures | | | | | | |
| Weight | Net | kg [lbs] | 47.5 [104.7] | 69 [152.1] | 92 [202.8] | 93 [205] |
| Dimension W*H*D | Net | mm [in] | 917*700*320 [36.1*27.6*12.6] | 970*808*383 [38.2*31.8*15.1] | 940*1324*340 [37.0*52.1*13.4] | 940*1324*340 [37.0*52.1*13.4] |
| | Packing | mm [in] | 1015*762*425 [40.0*30.0*16.7] | 1105*885*495 [43.5*33.7*19.5] | 1080*1440*430 [42.5*56.7*16.9] | 1080*1440*430 [42.5*56.7*16.9] |
| | Air Flow | | m3/h | 3800 | 4000 | 7200 |
| Sound Pressure Level | Rated | dB (A) | 58 | 60 | 60 | 60 |
| Piping | | | | | | |
| Diameter | Liquid (O.D.) | mm [in] | 2x6.35 [1/4] | 3x6.35 [1/4] | 4x6.35 [1/4] | 5x6.35 [1/4] |
| | Gas (O.D.) | mm [in] | 2x9.52 [3/8] | 3x9.52 [3/8] | 4x9.52 [3/8] | 5x9.52 [3/8] |
| Max. Length | Total | m [ft] | 40 [131] | 60 [197] | 80 [263] | 80 [263] |
| Max. Length | 1 Unit | m [ft] | 25 [82] | 30 [98] | 35 [115] | 35 [115] |
| Max. Height Difference | IDU & ODU | m [ft] | 10 [33] | 10 [33] | 10 [33] | 10 [33] |
| Electrical | | | | | | |
| Power Supply | V~,Ph,Hz | | 208~230,1,60 | 208~230,1,60 | 208~230,1,60 | 208~230,1,60 |
| MCA | A | | 20 | 26 | 32 | 32 |
| MOCP | A | | 30 | 40 | 45 | 45 |
| Refrigerant | | | | | | |
| Type | | | R32 | R32 | R32 | R32 |
| Charge | | kg [oz] | 1.4 [49.4] | 1.8 [63.5] | 2.5 [88.2] | 3.0 [105.8] |
| Guaranteed Temperature Operation Range | | | | | | |
| Cooling | | °C [°F] | -25~52 [-13~125] | -25~52 [-13~125] | -25~52 [-13~125] | -25~52 [-13~125] |
| Heating | | °C [°F] | -30~24 [-22~75] | -30~24 [-22~75] | -30~24 [-22~75] | -30~24 [-22~75] |

Remarks:

- All specifications are subject to change by the manufacturer without prior notice.
- All units are being tested and comply to ISO 5151.
- Sound pressure levels are measured in anechoic chamber. During actual operation, sound pressure level will be higher as a result of room specification condition.
- Data from AUX lab, 08/03/24. Data may change according to test surroundings. AUX reserves right of explanation on data.



CA



CD



Remote

Wired
Controller

SPECIFICATIONS

HIGH WALL

| AFEB MODEL | | | 7K | 9K | 12K | 18K | 24K |
|----------------------|---------------|------------|--|--|--|--|--|
| Model | | | AFEB07HP230V1CH | AFEB09HP230V1CH | AFEB12HP230V1CH | AFEB18HP230V2CH | AFEB24HP230V1CH |
| Capacity | Cooling | Btu/h | 7000 | 9100 | 12000 | 18000 | 23000 |
| | Heating | Btu/h | 7000 | 10000 | 12300 | 18000 | 24000 |
| Electrical | Power Supply | V~,Ph,Hz | 208 ~ 230,1,60 | 208 ~ 230,1,60 | 208 ~ 230,1,60 | 208 ~ 230,1,60 | 208 ~ 230,1,60 |
| | Input Current | A | 0.2 | 0.2 | 0.2 | 0.25 | 0.24 |
| Air Flow | SH/H/M/L/Q | m3/h [CFM] | 603/535/479/433/305 [355/315/282/255/180] | 603/535/479/433/305 [355/315/282/255/180] | 645/560/513/463/328 [380/330/302/273/193] | 951/842/742/642/428 [560/496/437/378/252] | 1248/1107/975/844/562 [735/652/574/497/331] |
| Sound Pressure Level | SH/H/M/L/Q | dB (A) | 41/36/34/31/26 | 41/36/34/31/26 | 43/40/36/33/27 | 49/45/41/37/29 | 50/48/44/39/33 |
| Weight | Net | kg [lbs] | 8 [17.7] | 8 [17.7] | 8.5 [18.8] | 11.5 [25.3] | 14 [30.9] |
| Dimension W*H*D | Net | mm [in] | 774*301*214 [30.5*11.8*8.4] | 774*301*214 [30.5*11.8*8.4] | 834*303*214 [32.8*11.9*8.4] | 1002*322*237 [39.4*12.7*9.3] | 1145*337*245 [45.1*13.3*9.6] |
| | Packing | mm [in] | 835*371*300 [32.9*14.6*11.8] | 835*371*300 [32.9*14.6*11.8] | 895*371*300 [35.2*14.6*11.8] | 1068*392*327 [42.0*15.4*12.9] | 1207*403*342 [47.5*15.9*13.5] |
| Piping | Liquid (O.D.) | mm [in] | 6.35 [1/4] | 6.35 [1/4] | 6.35 [1/4] | 6.35 [1/4] | 6.35 [1/4] |
| | Gas (O.D.) | mm [in] | 9.52 [3/8] | 9.52 [3/8] | 9.52 [3/8] | 12.7 [1/2] | 15.88 [5/8] |

| AJAN MODEL | | | 9K | 12K | 18K | 24K |
|----------------------|---------------|------------|--|--|--|--|
| Model | | | AJAN09HP230V1CH | AJAN12HP230V1CH | AJAN18HP230V1CH | AJAN24HP230V1CH |
| Capacity | Cooling | Btu/h | 9100 | 12000 | 18000 | 24000 |
| | Heating | Btu/h | 10000 | 12300 | 19100 | 24000 |
| Electrical | Power Supply | V~,Ph,Hz | 208 ~ 230,1,60 | 208 ~ 230,1,60 | 208 ~ 230,1,60 | 208 ~ 230,1,60 |
| | Input Current | A | 0.2 | 0.2 | 0.2 | 0.25 |
| Air Flow | SH/H/M/L/Q | m3/h [CFM] | 603/535/479/433/305 [355/315/282/255/180] | 645/560/513/463/328 [380/330/302/273/193] | 951/842/742/642/428 [560/496/437/378/252] | 1248/1107/975/844/562 [735/652/574/497/331] |
| Sound Pressure Level | SH/H/M/L/Q | dB (A) | 41/36/34/31/26 | 43/40/36/33/27 | 49/46/42/37/29 | 50/48/44/39/33 |
| Weight | Net | kg [lbs] | 8 [17.7] | 8.5 [18.8] | 11 [24.2] | 14 [30.9] |
| Dimension W*H*D | Net | mm [in] | 774*301*200 [30.5*11.8*7.9] | 834*301*200 [32.8*11.8*7.9] | 1002*319*223 [39.4*12.6*8.8] | 1145*335*230 [45.1*13.2*9.0] |
| | Packing | mm [in] | 831*371*282 [32.7*14.6*11.1] | 891*371*282 [35.1*14.6*11.1] | 1070*385*312 [42.1*15.2*12.3] | 1210*400*327 [47.6*15.7*12.9] |
| Piping | Liquid (O.D.) | mm [in] | 6.35 [1/4] | 6.35 [1/4] | 6.35 [1/4] | 6.35 [1/4] |
| | Gas (O.D.) | mm [in] | 9.52 [3/8] | 9.52 [3/8] | 12.7 [1/2] | 15.88 [5/8] |

| AMAR MODEL | | | 9K | 12K | 18K | 24K |
|----------------------|---------------|------------|--|--|--|--|
| Model | | | AMAR09HP230V1CH | AMAR12HP230V1CH | AMAR18HP230V1CH | AMAR24HP230V2CH |
| Capacity | Cooling | Btu/h | 9200 | 12000 | 18000 | 22500 |
| | Heating | Btu/h | 10000 | 12300 | 18200 | 24000 |
| Electrical | Power Supply | V~,Ph,Hz | 208 ~ 230,1,60 | 208 ~ 230,1,60 | 208 ~ 230,1,60 | 208 ~ 230,1,60 |
| | Input Current | A | 0.2 | 0.2 | 0.2 | 0.25 |
| Air Flow | SH/H/M/L/Q | m3/h [CFM] | 603/535/479/433/305 [355/315/282/255/180] | 645/560/513/463/328 [380/330/302/273/193] | 1248/1107/975/844/562 [735/652/574/497/331] | 1597/1415/1260/1080 [940/833/742/636] |
| Sound Pressure Level | SH/H/M/L/Q | dB (A) | 41/36/34/31/26 | 43/40/36/33/27 | 50/46/43/38/31 | 51/48/44/39/34 |
| Weight | Net | kg [lbs] | 8 [17.7] | 8.5 [18.8] | 13 [28.7] | 16 [35.3] |
| Dimension W*H*D | Net | mm [in] | 774*301*214 [30.5*11.8*8.4] | 834*303*214 [32.8*11.9*8.4] | 1145*337*245 [45.1*13.3*9.6] | 1250*359*253 [49.2*14.1*9.9] |
| | Packing | mm [in] | 835*371*300 [32.9*14.6*11.8] | 895*371*300 [35.2*14.6*11.8] | 1207*403*342 [47.5*15.9*13.5] | 1340*445*355 [52.7*17.5*14.0] |
| Piping | Liquid (O.D.) | mm [in] | 6.35 [1/4] | 6.35 [1/4] | 6.35 [1/4] | 6.35 [1/4] |
| | Gas (O.D.) | mm [in] | 9.52 [3/8] | 9.52 [3/8] | 12.7 [1/2] | 15.88 [5/8] |

Remarks:
 1. All specifications are subject to change by the manufacturer without prior notice.
 2. All units are being tested and comply to ISO 5151.
 3. Sound pressure levels are measured in anechoic chamber. During actual operation, sound pressure level will be higher as a result of room specification condition.
 4. Data from AUX lab, 08/03/24. Data may change according to test surroundings. AUX reserves right of explanation on data.





Remote



Wired
Controller



SPECIFICATIONS

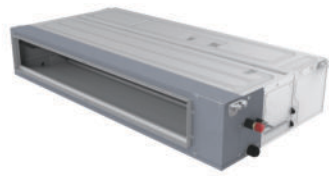
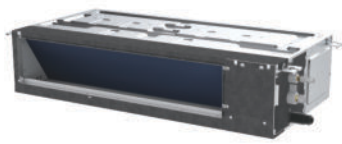
CASSETTE UNIT

| 4-way Cassette | | 9K | 12K | 18K | 24K |
|-----------------------------|----------|-----------------|-----------------|-----------------|-----------------|
| Model | | AFEB09HP230V1CC | AFEB12HP230V1CC | AFEB18HP230V1CC | AFEB24HP230V1CC |
| Capacity | | | | | |
| Cooling | Btu/h | 9000 | 12000 | 18000 | 24000 |
| Heating | Btu/h | 10000 | 12000 | 18500 | 24000 |
| Electrical | | | | | |
| Power Supply | V~,Ph,Hz | 208 ~ 230,1,60 | 208 ~ 230,1,60 | 208 ~ 230,1,60 | 208 ~ 230,1,60 |
| Input Current | A | 0.2 | 0.2 | 0.32 | 0.6 |
| Air Flow | | | | | |
| H/M/L | CFM | 412/365/312 | 412/365/312 | 447/382/341 | 823/764/676 |
| | m3/h | 700/620/530 | 700/620/530 | 760/650/580 | 1400/1300/1150 |
| Sound Pressure Level | | | | | |
| Rated | dB (A) | 40 | 40 | 45 | 47 |
| Dimension | | | | | |
| Net W*H*D | mm | 570*260*570 | 570*260*570 | 570*260*570 | 840*305*840 |
| | in | 22.4*10.2*22.4 | 22.4*10.2*22.4 | 22.4*10.2*22.4 | 33.1*12.1*33.1 |
| Packing W*H*D | mm | 720*290*650 | 720*290*650 | 720*290*650 | 910*310*910 |
| | in | 28.4*11.4*25.6 | 28.4*11.4*25.6 | 28.4*11.4*25.6 | 35.8*12.2*35.8 |
| Net (Pannel) W*H*D | mm | 650*55*650 | 650*55*650 | 650*55*650 | 950*55*950 |
| | in | 25.6*2.2*25.6 | 25.6*2.2*25.6 | 25.6*2.2*25.6 | 37.4*2.2*37.4 |
| Packing (Pannel) W*H*D | mm | 710*80*710 | 710*80*710 | 710*80*710 | 1000*100*1000 |
| | in | 28.0*3.2*28.0 | 28.0*3.2*28.0 | 28.0*3.2*28.0 | 39.4*3.9*39.4 |
| Weight | | | | | |
| Net/Gross (Body) | kg | 14.0/17.0 | 14.0/17.0 | 15.0/17.5 | 24.0/28.0 |
| | lbs | 30.9/37.5 | 30.9/37.5 | 33.1/38.6 | 52.9/61.7 |
| Net/Gross (Pannel) | kg | 2.2/3.7 | 2.2/3.7 | 2.2/3.7 | 5.3/7.8 |
| | lbs | 4.9/8.2 | 4.9/8.2 | 4.9/8.2 | 11.7/17.2 |
| Piping | | | | | |
| Liquid (O.D.) | mm [in] | 6.35 [1/4] | 6.35 [1/4] | 6.35 [1/4] | 6.35 [1/4] |
| Gas (O.D.) | mm [in] | 9.52 [3/8] | 9.52 [3/8] | 12.7 [1/2] | 15.88 [5/8] |

Remarks:

- All specifications are subject to change by the manufacturer without prior notice.
- All units are being tested and comply to ISO 5151.
- Sound pressure levels are measured in anechoic chamber. During actual operation, sound pressure level will be higher as a result of room specification condition.
- Data from AUX lab, 08/03/24. Data may change according to test surroundings. AUX reserves right of explanation on data.





Wired
Controller



SPECIFICATIONS

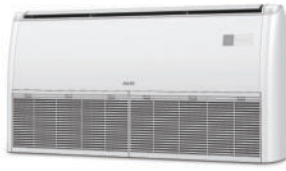
DUCTED UNIT (Horizontal configuration)

| Ducted | | 9K | 12K | 18K | 24K |
|-----------------------------|----------|-----------------|-----------------|-----------------|--------------------|
| Model | | AFEB09HP230V1SD | AFEB12HP230V1SD | AFEB18HP230V1SD | AFEB24HP230V1SD |
| Capacity | | | | | |
| Cooling | Btu/h | 9000 | 12000 | 18000 | 24000 |
| Heating | Btu/h | 10000 | 12000 | 19000 | 24600 |
| Electrical | | | | | |
| Power Supply | V~,Ph,Hz | 208 ~ 230,1,60 | 208 ~ 230,1,60 | 208 ~ 230,1,60 | 208 ~ 230,1,60 |
| Input Current | A | 0.6 | 0.6 | 0.6 | 1.06 |
| Air Flow | | | | | |
| T/H/M/L | CFM | 353/333/286/236 | 353/333/286/236 | 530/488/412/344 | 795/747/647/529 |
| | m3/h | 600/565/486/401 | 600/565/486/401 | 900/829/700/584 | 1350/1269/1100/898 |
| Static Pressure | | | | | |
| | in. Aq | 0.1 | 0.1 | 0.1 | 0.1 |
| | Pa | 25 (0~50) | 25 (0~50) | 25 (0~80) | 25 (0~80) |
| Sound Pressure Level | | | | | |
| Rated | dB (A) | 34 | 34 | 39 | 42 |
| Dimension | | | | | |
| Net | mm | 700*198*450 | 700*198*450 | 700*245*700 | 1000*245*700 |
| | in | 27.6*7.8*17.7 | 27.6*7.8*17.7 | 27.6*9.7*27.6 | 39.4*9.7*27.6 |
| Packing | mm | 870*260*540 | 870*260*540 | 930*300*830 | 1230*300*830 |
| | in | 34.3*10.2*21.3 | 34.3*10.2*21.3 | 36.6*11.8*32.7 | 48.4*11.8*32.7 |
| Weight | | | | | |
| Net/Gross (Body) | kg | 12.5/15.0 | 12.5/15.0 | 21.5/25.5 | 27.0/32.0 |
| | lbs | 27.6/33.1 | 27.6/33.1 | 47.4/56.2 | 59.5/70.5 |
| Piping | | | | | |
| Liquid (O.D.) | mm [in] | 6.35 [1/4] | 6.35 [1/4] | 6.35 [1/4] | 6.35 [1/4] |
| Gas (O.D.) | mm [in] | 9.52 [3/8] | 9.52 [3/8] | 12.7 [1/2] | 15.88 [5/8] |

Remarks:

- All specifications are subject to change by the manufacturer without prior notice.
- All units are being tested and comply to ISO 5151.
- Sound pressure levels are measured in anechoic chamber. During actual operation, sound pressure level will be higher as a result of room specification condition.
- Data from AUX lab, 08/03/24. Data may change according to test surroundings. AUX reserves right of explanation on data.





Remote



Wired Controller



SPECIFICATIONS

CEILING & FLOOR UNIT

| Ceiling & Floor | | 9K | 12K | 18K | 24K |
|-----------------------------|----------|-----------------|-----------------|-----------------|--------------------|
| Model | | AFEB09HP230V1FL | AFEB12HP230V1FL | AFEB18HP230V1FL | AFEB24HP230V1FL |
| Capacity | | | | | |
| Cooling | Btu/h | 9000 | 12000 | 18000 | 24000 |
| Heating | Btu/h | 11000 | 12000 | 18000 | 24000 |
| Electrical | | | | | |
| Power Supply | V~,Ph,Hz | 208 ~ 230,1,60 | 208 ~ 230,1,60 | 208 ~ 230,1,60 | 208 ~ 230,1,60 |
| Input Current | A | 0.3 | 0.3 | 0.4 | 0.5 |
| Air Flow | | | | | |
| T/H/M/L | CFM | 500/459/382/324 | 500/459/382/324 | 559/530/420/350 | 824/765/600/494 |
| | m3/h | 850/780/650/550 | 850/780/650/550 | 950/900/713/595 | 1400/1300/1020/840 |
| Sound Pressure Level | | | | | |
| Rated | dB (A) | 39 | 39 | 41 | 44 |
| Dimension | | | | | |
| Net W*H*D | mm | 1000*690*235 | 1000*690*235 | 1000*690*235 | 1280*690*235 |
| | in | 39.4*27.2*9.3 | 39.4*27.2*9.3 | 39.4*27.2*9.3 | 50.4*27.2*9.3 |
| Packing W*H*D | mm | 1080*770*325 | 1080*770*325 | 1080*770*325 | 1360*770*325 |
| | in | 42.5*30.3*12.8 | 42.5*30.3*12.8 | 42.5*30.3*12.8 | 53.5*30.3*12.8 |
| Weight | | | | | |
| Net/Gross (Body) | kg | 26.0/30.5 | 26.0/30.5 | 27.0/31.5 | 32.5/38.0 |
| | lbs | 57.3/67.2 | 57.3/67.2 | 59.5/69.5 | 71.7/83.8 |
| Piping | | | | | |
| Liquid (O.D.) | mm [in] | 6.35 [1/4] | 6.35 [1/4] | 6.35 [1/4] | 6.35 [1/4] |
| Gas (O.D.) | mm [in] | 9.52 [3/8] | 9.52 [3/8] | 12.7 [1/2] | 15.88 [5/8] |

Remarks:

- All specifications are subject to change by the manufacturer without prior notice.
- All units are being tested and comply to ISO 5151.
- Sound pressure levels are measured in anechoic chamber. During actual operation, sound pressure level will be higher as a result of room specification condition.
- Data from AUX lab, 08/03/24. Data may change according to test surroundings. AUX reserves right of explanation on data.



COMBINATION TABLE

ASPR18HPMULO ASUM18HPMULO

| Two Units | | |
|-----------|--------|---------|
| 9K+9K | 9K+12K | 12K+12K |

ASPR24HPMULO ASUM24HPMULO

| Two Units | | Three Units | |
|-----------|---------|-------------|-------------|
| 9K+9K | 9K+18K | 9K+9K+9K | 9K+12K+12K |
| 9K+12K | 12K+18K | 9K+9K+12K | 12K+12K+12K |
| 12K+12K | 18K+18K | 9K+9K+18K | - |

ASPR30HPMULO

| Two Units | | Three Units | | Four Units | |
|-----------|---------|-------------|-------------|---------------|---|
| 9K+9K | 18K+18K | 9K+9K+9K | 9K+9K+24K | 9K+9K+9K+9K | - |
| 9K+12K | 9K+24K | 9K+9K+12K | 9K+12K+18K | 9K+9K+9K+12K | - |
| 9K+18K | 12K+24K | 9K+9K+18K | 12K+12K+18K | 9K+9K+9K+18K | - |
| 12K+12K | 18K+24K | 9K+12K+12K | - | 9K+9K+12K+12K | - |
| 12K+18K | - | 12K+12K+12K | - | - | - |

ASPR36HPMULO ASUM36HPMULO

| Two Units | |
|-----------|---------|
| 9K+9K | 18K+18K |
| 9K+12K | 9K+24K |
| 12K+12K | 12K+24K |
| 9K+18K | 18K+24K |
| 12K+18K | 24K+24K |

| Three Units | | |
|-------------|-------------|-------------|
| 9K+9K+9K | 9K+9K+24K | 9K+18K+24K |
| 9K+9K+12K | 9K+12K+18K | 12K+12K+24K |
| 9K+9K+18K | 12K+12K+18K | 12K+18K+18K |
| 9K+12K+12K | 9K+12K+24K | 12K+18K+24K |
| 12K+12K+12K | 9K+18K+18K | 18K+18K+18K |

| Four Units | | |
|---------------|----------------|-----------------|
| 9K+9K+9K+9K | 9K+9K+12K+18K | 12K+12K+12K+12K |
| 9K+9K+9K+12K | 9K+9K+12K+24K | 12K+12K+12K+18K |
| 9K+9K+9K+18K | 9K+9K+18K+18K | - |
| 9K+9K+9K+24K | 9K+12K+12K+12K | - |
| 9K+9K+12K+12K | 9K+12K+12K+18K | - |

ASPR42HPMULO ASUM42HPMULO

| Two Units | | Four Units | | | |
|-----------|---------|---------------|----------------|-----------------|-----------------|
| 9K+9K | 9K+24K | 9K+9K+9K+9K | 9K+9K+12K+24K | 9K+12K+18K+18K | 12K+12K+18K+18K |
| 9K+12K | 12K+24K | 9K+9K+9K+12K | 9K+9K+18K+18K | 9K+12K+18K+24K | - |
| 12K+12K | 18K+24K | 9K+9K+9K+18K | 9K+9K+18K+24K | 9K+18K+18K+18K | - |
| 9K+18K | 24K+24K | 9K+9K+9K+24K | 9K+12K+12K+12K | 12K+12K+12K+12K | - |
| 12K+18K | - | 9K+9K+12K+12K | 9K+12K+12K+18K | 12K+12K+12K+18K | - |
| 18K+18K | - | 9K+9K+12K+18K | 9K+12K+12K+24K | 12K+12K+12K+24K | - |

| Three Units | | | Five Units | | |
|-------------|-------------|-------------|------------------|--------------------|---------------------|
| 9K+9K+9K | 9K+9K+24K | 12K+12K+24K | 9K+9K+9K+9K+9K | 9K+9K+9K+12K+24K | 12K+12K+12K+12K+12K |
| 9K+9K+12K | 9K+18K+18K | 12K+18K+18K | 9K+9K+9K+9K+12K | 9K+9K+9K+18K+18K | - |
| 9K+9K+18K | 9K+18K+24K | 12K+18K+24K | 9K+9K+9K+9K+18K | 9K+9K+12K+12K+12K | - |
| 9K+9K+24K | 9K+24K+24K | 12K+24K+24K | 9K+9K+9K+9K+24K | 9K+9K+12K+12K+18K | - |
| 9K+12K+12K | 12K+12K+12K | 18K+18K+18K | 9K+9K+9K+12K+12K | 9K+12K+12K+12K+12K | - |
| 9K+12K+18K | 12K+12K+18K | 18K+18K+24K | 9K+9K+9K+12K+18K | 9K+12K+12K+12K+18K | - |

AUX



Exclusive Distributor

ENAIRJ